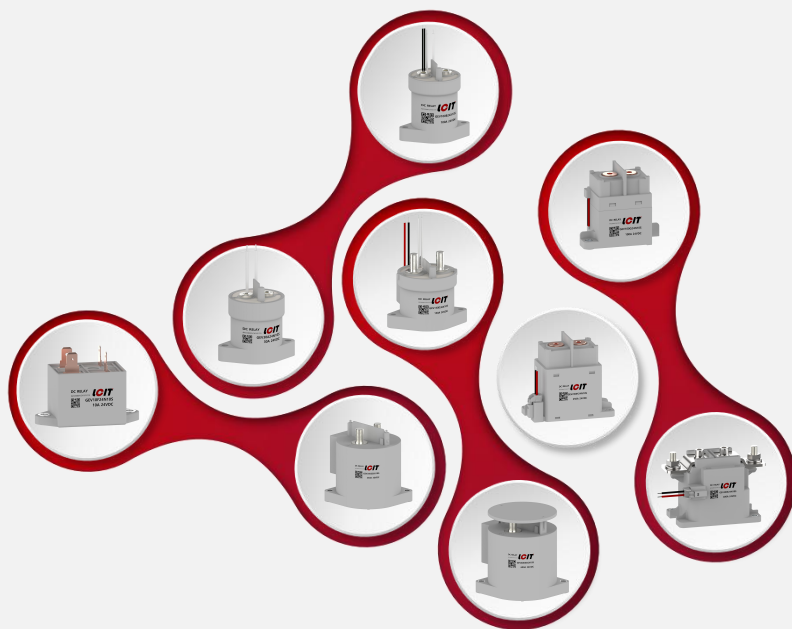


新随我动掣电而行

专注新能源车辆及充放电设施、风光储能系统等领域



100A GEV100B

应用领域 Application field

高压直流
High voltage direct current

工商业车辆、通讯、低速车辆、家庭储能、5G通讯、充换电站
Industrial and commercial vehicles, communications, low-speed vehicles, home energy storage, 5G communications, charging and changing power stations
电动汽车、环卫车辆、充电桩、光伏、工商业储能、重卡、岸电
Electric vehicles, sanitation vehicles, charging piles, photovoltaic, industrial and commercial energy storage, heavy trucks, shore power



线圈参数 Coil parameter : 20℃ 【±10%】

额定电压 Rated voltage	吸合电压 Pick-up voltage	释放电压 release voltage	最大吸合电压 Maximum pick-up voltage	额定电阻±5% rated resistance	线圈电流 Coil current	线圈功率 Coil power
12 VDC	≤ 9 VDC	≥ 1.2 VDC	16 VDC	26 Ω	462mA	5.6 W
24 VDC	≤ 18 VDC	≥ 2.4 VDC	32 VDC	96 Ω	250mA	6.0 W
36 VDC	≤ 27 VDC	≥ 3.6 VDC	45 VDC	216 Ω	167mA	6.0 W
48 VDC	≤ 36 VDC	≥ 4.8 VDC	64 VDC	392 Ω	123mA	5.9 W

性能参数 Performance parameter : 20℃

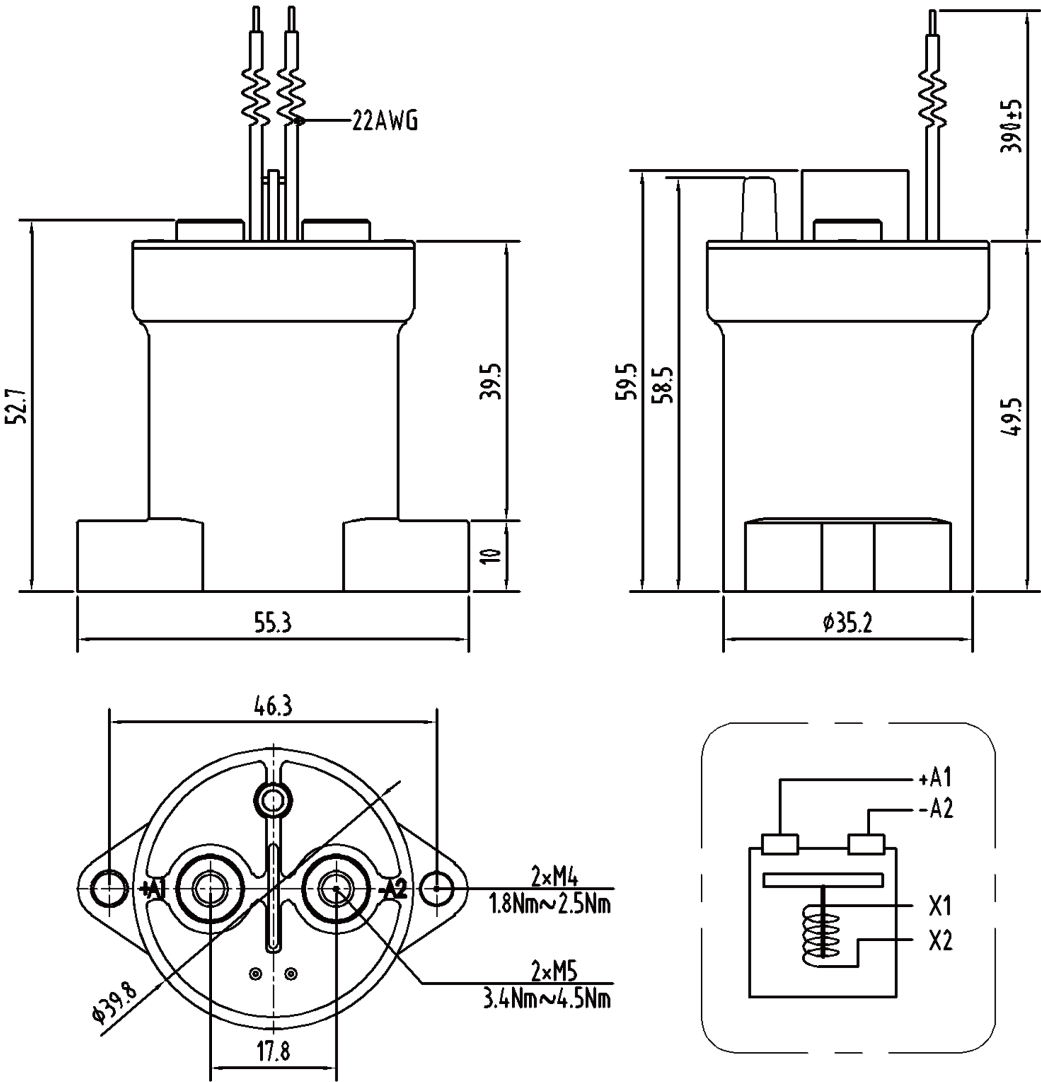
主触点形式 Main contact form	SPST-NO
辅助触点 Auxiliary contact	SPST-NO
负载电压 Load voltage	12 ~ 1000Vdc
负载电流 Load current	1 ~ 100A
短时耐受电流及时间 Short-time withstand current and time	150A 600Sec. / 200A 180Sec.
最大分断电流 Maximum breaking current	500A (450VDC) 1次
接触电阻 (初始) Contact resistance (Inception)	≤ 1mΩ (at 100A)
吸合时间 Pickup time	Max. 25ms
弹跳时间 Bounce time	Max. 5ms
释放时间 Release time	Max. 10ms
机械耐久性 Mechanical Endurance	3×10 ⁵ 次
电耐久性 (阻性负载) Electrical durability (Resistive load)	200Vdc 1×10 ⁴ 次/450Vdc 6×10 ³ 次 750Vdc 1×10 ³ 次
辅助触头最大负载 Maximum load of auxiliary contact	2A, 30VDC / 3A, 125VAC
辅助触头最小负载 Minimum load of auxiliary contact	100mA, 8VDC
辅助触头接触电阻 Auxiliary contact contact resistance	0.50Ω @ 30VDC / 0.15Ω @ 125VAC
介质耐压触点与线圈间 Between dielectric withstand voltage contact and coil	2500VAC 1min
介质耐压断开触点间 Between dielectric withstand voltage breaking contacts	3500VAC 1min
初始绝缘电阻 Initial insulation resistance	1000mΩ (1000Vdc)
振动 Vibration	10Hz ~ 500Hz 49m/s ²
冲击稳定性 Impact stability	196m/s ²
冲击强度 Impact strength	490m/s ²
湿度 humidness	5% ~ 85%RH
温度 temperature	-40℃ ~ 85℃
海拔高度 altitude	≤ 4000m
重量 weight	约about185g

订货标记示例 Order mark example

GEV	100	B	24	X	10	S
↓	↓	↓	↓	↓	↓	↓
LCIT企业 EV继电器代码 LCIT enterprise EV relay code	额定电流A Rated current A	壳体编码 Shape coding	线圈电压 Coil voltage 12:12Vdc,24:24Vdc 36:36Vdc,48:48Vdc	辅助触点 Auxiliary contact N = None X= SPST-NO C = SPST-NC	负载电压 Load voltage 10=12-1000Vdc	主触点极性 Main contact polarity S=有 have B=无 none

外形尺寸、接线图、安装孔尺寸

Overall dimensions, wiring diagram, mounting hole dimensions



1. 产品部分外形尺寸未注尺寸公差，
当外形尺寸 $\leq 10\text{mm}$ ，公差 $\pm 0.3\text{mm}$ ；
当外形尺寸 在 $(10 \sim 50)\text{mm}$ 之间时，公差为 $\pm 0.5\text{mm}$ ；
当外形尺寸 $\geq 50\text{mm}$ ，公差为 $\pm 0.8\text{mm}$ 。

2. 公差仅供参考，当与实物不一致时，请以实物尺寸为准。
1. No dimensional tolerances have been noted in the overall dimensions of some products.
When the overall size is $\leq 10\text{mm}$, the tolerance is $\pm 0.3\text{mm}$;
When the overall size is between $(10 \sim 50)\text{mm}$, the tolerance is $\pm 0.5\text{mm}$;
When the overall size is $\geq 50\text{mm}$, the tolerance is $\pm 0.8\text{mm}$.

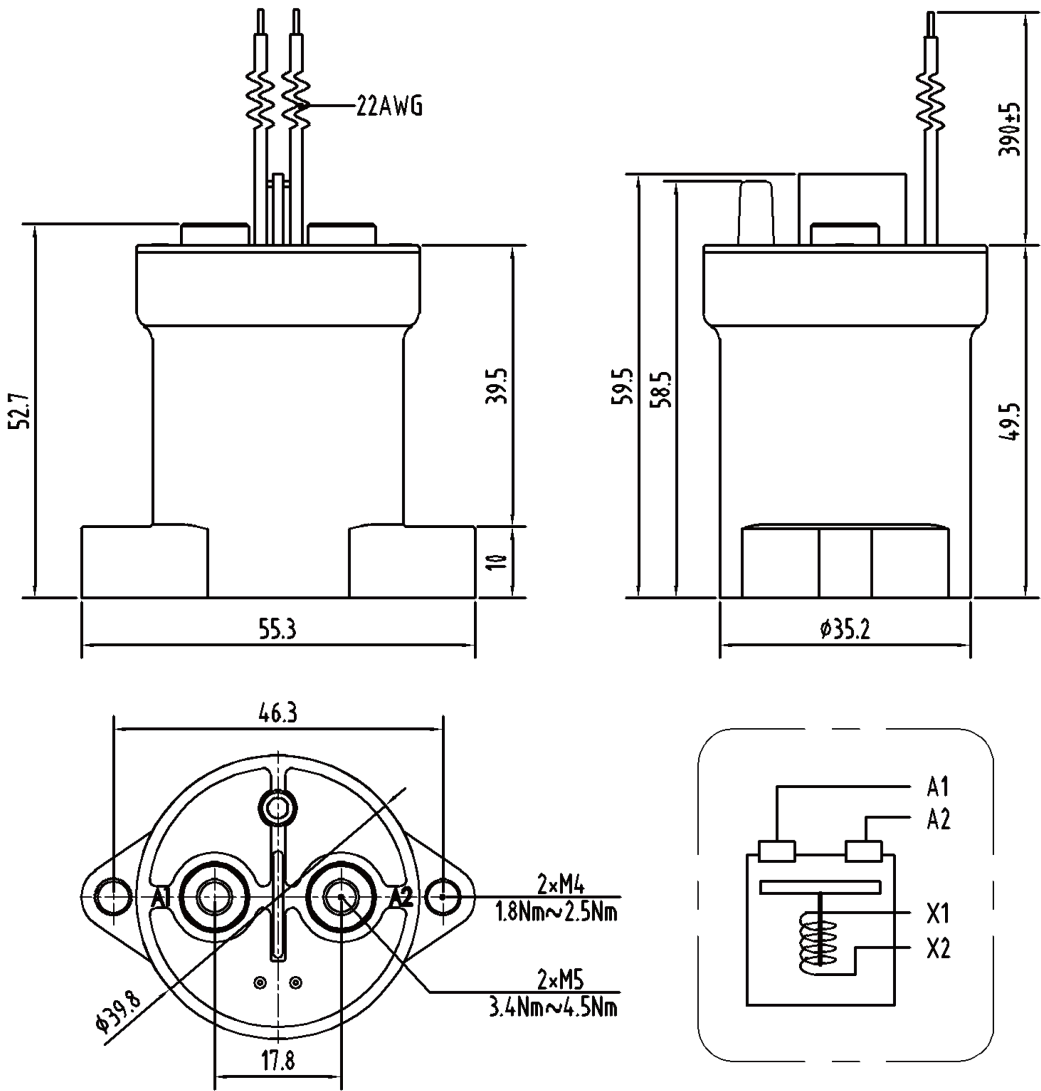
2. Tolerance is for reference only, when inconsistent with the real size, please refer to the real size.

订货标记示例 Order mark example

GEV	100	B	24	X	10	B
↓	↓	↓	↓	↓	↓	↓
LCIT企业 EV继电器代码 LCIT enterprise EV relay code	额定电流A Rated current A	壳体编码 Shape coding	线圈电压 Coil voltage 12:12Vdc,24:24Vdc 36:36Vdc,48:48Vdc	辅助触点 Auxiliary contact N = None X= SPST-NO C = SPST-NC	负载电压 Load voltage 10=12-1000VDC	主触点极性 Main contact polarity S=有 have B=无 none

外形尺寸、接线图、安装孔尺寸

Overall dimensions, wiring diagram, mounting hole dimensions



1. 产品部分外形尺寸未注尺寸公差，
当外形尺寸 $\leq 10\text{mm}$ ，公差 $\pm 0.3\text{mm}$ ；
当外形尺寸 在 $(10 \sim 50)\text{mm}$ 之间时，公差为 $\pm 0.5\text{mm}$ ；
当外形尺寸 $\geq 50\text{mm}$ ，公差为 $\pm 0.8\text{mm}$ 。

2. 公差仅供参考，当与实物不一致时，请以实物尺寸为准。
1. No dimensional tolerances have been noted in the overall dimensions of some products.
When the overall size is $\leq 10\text{mm}$, the tolerance is $\pm 0.3\text{mm}$;
When the overall size is between $(10 \sim 50)\text{mm}$, the tolerance is $\pm 0.5\text{mm}$;
When the overall size is $\geq 50\text{mm}$, the tolerance is $\pm 0.8\text{mm}$.

2. Tolerance is for reference only, when inconsistent with the real size, please refer to the real size.



Shanghai Lcit Industrial Co.,Ltd.
www.lcitind.com www.lcitind.cn
+86-21-57646228
880 Ziyue Road, Minhang District, Shanghai